

# What's New in inForm 2.4?

inForm software allows image analysis of proprietary PerkinElmer images taken with Mantra, Vectra 3, or Vectra Polaris, along with standard image formats such as .tif, .jpg and .png images.

Below, we've highlighted the new features of inForm 2.4

- ▶ Live Cell Segmentation Preview
- ▶ Adaptive Cell Segmentation



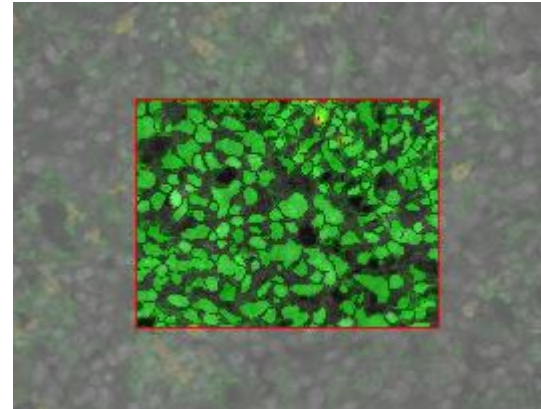
## ► Live Cell Segmentation Preview

You can now see cell segmentation results in real time!

The preview window will automatically appear when you start adjusting segmentation settings. The results will update immediately within the preview.

You can click and drag this preview window to other areas of the image to see how your segmentation settings are performing.

You can hide the preview window by clicking Hide Preview, and show it again using the same button.



Hide Preview

## ► Adaptive Cell Segmentation

Our new cell segmentation algorithm uses an adaptive thresholding method to determine signal from background in a localized area. This increases the segmentation accuracy when there are tightly packed cells or cells of varying intensity.

Select Adaptive Cell Segmentation when configuring or making a new project.

Each nuclear component has a relative threshold parameter to determine signal from background. You can use as many nuclear signals as you have stained.

You can also use cytoplasm and membrane signals to aid in nuclear splitting.

